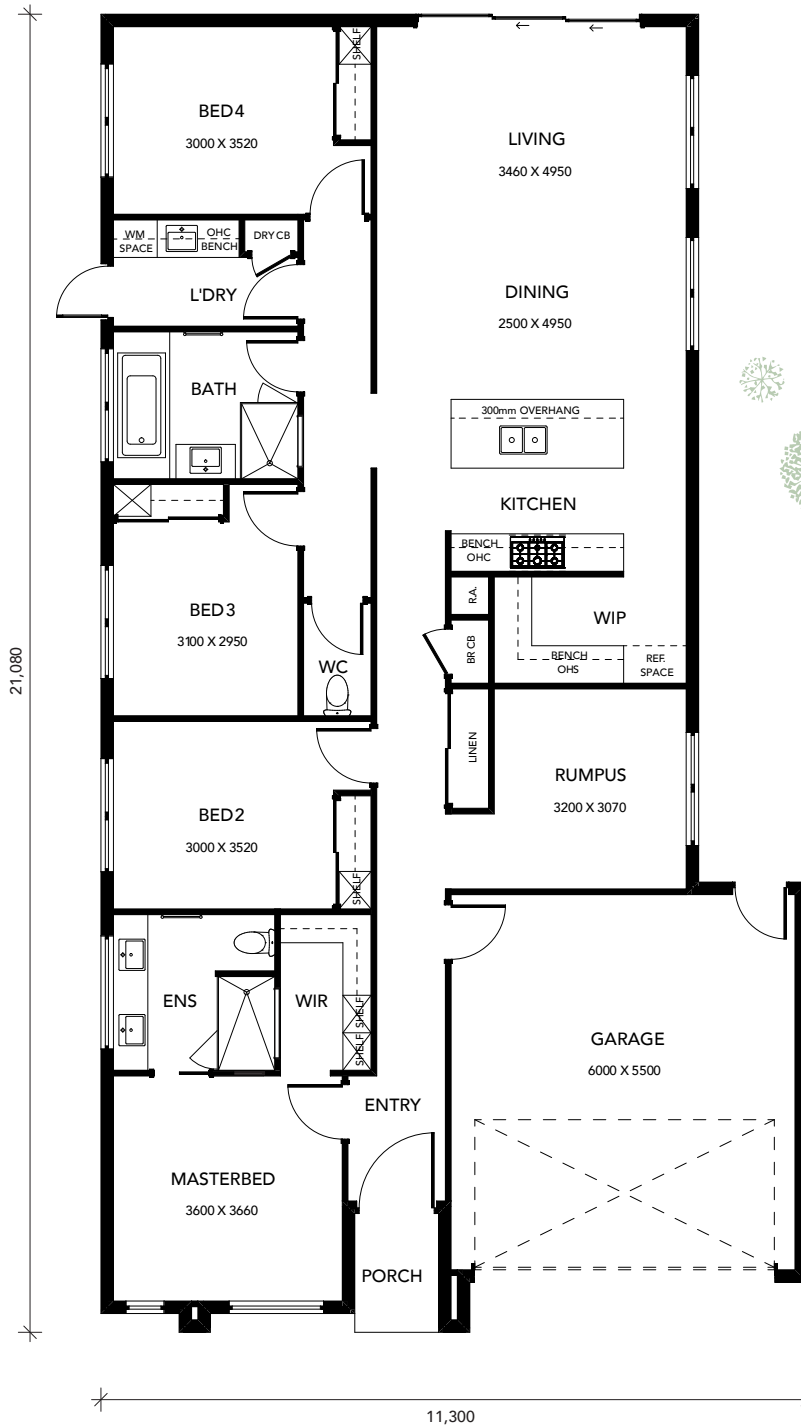


Pyrenees 22 with Rumpus

Compact living with style

The Pyrenees range offers compact living, perfectly suited to the first home builder or investor. With ample living space and flexible kitchen and ensuite options, the Pyrenees is the ultimate design for modern living.

12.5m



Specifications

Minimum lot width: 12.5m
Minimum lot length: 28m

Ground floor	170.43m ²
Garage	35.69m ²
Porch	2.55m ²
Total area	208.67m ²

